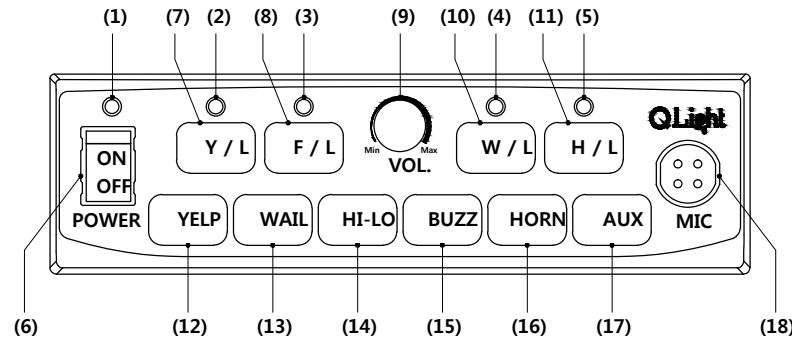
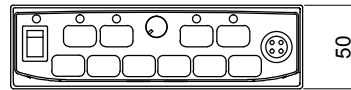
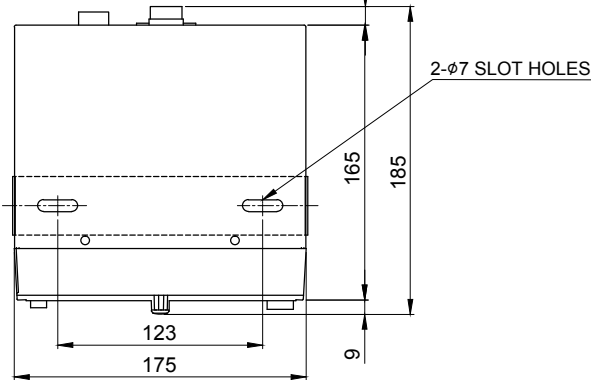


FITTING HOLES





BUTTON FUNCTION

MARK	DATE	REVISION	REVISER	APP .BY
①				
②				
③				

MODEL NO	SAMP-100
MATERIAL	BASE-AL COVER-STEEL BRACKET-AL
USE VOLTAGE	DC 12V
KIND OF SOUND	1. Fire. A-ANG(Wail) Sound 2. Emergency. WA-U(Yelp) Sound 3. Ambulance. PI-PO(Hi-Low) Sound 4. Microphone Phone OUTPUT-Max.
PROTECTION GRADE	WATER & DUST PROOF IP23

- (1) 전원공급 LED
- (2) 긴급 LED
- (3) 점멸등 LED
- (4) 경고등 LED
- (5) 구급음/경고음 LED
- (6) 전원 스위치
- (7) 긴급 버튼
- (8) 점멸등 버튼
- (9) 볼륨 조절 레버
- (10) 경고등 버튼
- (11) 구급음/경고등 버튼
- (12) 경찰음 버튼
- (13) 소방음 버튼
- (14) 구급음 버튼
- (15) 부저음 버튼
- (16) 경적음 버튼
- (17) 외부 버튼
- (18) 마이크 입력단자

ISO2768-1 : CLASS OF TOLERANCE						SURFACE FINISH	-					
FOR LINEAR DIMENSIONS		f	m	Ⓒ	v		Nr.	DWG. NO.	TITLE/ NAME		MAT'L	QTY
	0.5~3	±0.05	±0.1	±0.2	-	DSND BY S.H.KIM	CHKD BY J.H.PARK	CHKD BY 	APRV BY J.K.HAN	VIEW 3	DATE 2016.10.05	
	3~6			±0.3	±0.5							
	6~30	±0.1	±0.2	±0.5	±1							
	30~120	±0.15	±0.3	±0.8	±1.5							
	120~400	±0.2	±0.5	±1.2	±2.5							
400~1000	±0.3	±0.8	±2	±4								
FOR ANGULAR DIMENSIONS	0~10	±1°		±1°30'	±3°				DWG. NO. SAMP-100_OUT			
	10~50	±0°30'		±1°	±2°				SCALE N/S	SIZE A4	REV 00	SHEET 1/1
	50~120	±0°20'		±0°30'	±1°							
	120~400	±0°10'		±0°13'	±0°30'							
	TITLE SAMP-100 OUTLINE DRAWING											

A4(297X210)