

SEA Series



SEALR



SEAL

PRODUCT SPECIFICATION

SEALR | SEAL | SEAS | SEA

Materials Lens-Tempered glass, Filter-PC, Housing-Al, Protection cage-STSS316L, Reflector-PC,

Reflector-Heat resistant ABS

Ambient operating temperature

-20°C ≤ Tamb ≤ +60°C(TS)

-40°C ≤ Tamb ≤ +60°C

Explosion protection rating

IECEX - Ex db IIC T6 Gb, IP66

ATEX - II2G Ex db IIC T6 Gb, IP66

KCs - Ex d IIC T6 IP66

NEPSI, CCC - Ex db IIC T6 Gb

TS - Ex db IIC T6 IP66 Gb(SEAL)

Certificates IECEX, ATEX, NEPSI, CCC, KCs, CCS, TS

Housing standard color MUNSELL No. 7.5BG 7/2

Cable entry 1/2" NPT

- Large explosion proof Signal Beacons with excellent visibility for long distance
- A variety of light source selections from bulb, LED, and xenon lamp
- Aluminum housing provides excellent durability
- Fully enclosed structure with protection rating of IP66
- Integrated housing and terminal box model

※ Usable voltage AC120V: AC110V-120V, AC230V: AC220V-230V

SEALR LED Revolving Warning Light

Model number	Voltage	Current	Certificates	Weight	Color
SEALR	DC24V	0.075A		5.33kg	● R-Red
	AC120V	0.075A		5.74kg	● A-Amber
	AC230V	0.030A		5.74kg	● G-Green ● B-Blue

- Excellent omni-directional visibility with LED light collecting system and special multifaceted reflector
- Revolving speed: 120-140RPM

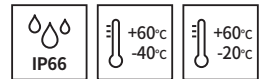
SEAL LED Steady/Flashing Signal Light

Model number	Voltage	Current	Certificates	Weight	Color
SEAL	DC24V	0.110A		4.87kg	● R-Red
	AC120V	0.075A		5.25kg	● A-Amber
	AC230V	0.050A		5.25kg	● G-Green ● B-Blue

- Long-lasting high intensity LED light source
- Suitable for applications where bulb replacement is difficult
- Built-in steady/flashing selection switch
- Flashing rate: 60-80 flashes/min

Customization

- Explosion proof cable gland attached type available (Standard type does not come with explosion proof cable gland)
- 2 ways cable entries
- Customized cable entry (3/4" NPT, M20×1.5, M25×1.5) available



SEAS Xenon Lamp Strobe Signal Beacon

Model number	Voltage	Current	Xenon lamp			Certificates	Weight	Color
			Spec	Standard	Parts no			
SEAS	DC24V	0.490A		EUB0641	48		5.39kg	● R-Red
	AC120V	0.115A	200V -550V	-1A(G)			5.35kg	● A-Amber
	AC230V	0.110A		U type			5.35kg	● G-Green ● B-Blue

- Lamp connector fastening structure allows for convenient lamp replacement
- Excellent long-distance visibility with strong strobe signal diffusion
- Flashing rate: 60-80 flashes/min



SEAS

SEA Bulb Revolving Signal Beacon

Model number	Voltage	Current	Bulb			Certificates	Weight	Color
			Spec	Standard	Parts no			
SEA	DC24V	0.850A	24V15W	G23 15S	18		5.36kg	● R-Red
	AC120V	0.190A	12V15W	G23 15S	17		5.75kg	● A-Amber
	AC230V	0.090A	12V15W	G23 15S	17		5.75kg	● G-Green ● B-Blue

- Excellent diffusion effect with special multifaceted reflector
- Revolving speed: 120-140RPM

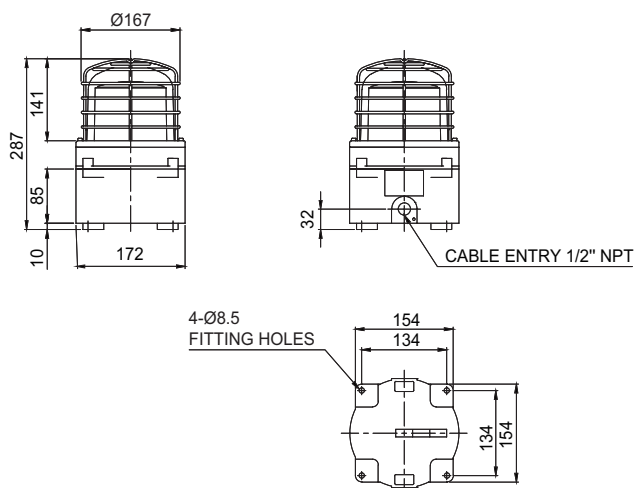


SEA

Technical Diagram

Units: mm

· SEALR / SEAL / SEAS / SEA



Ordering Specification

SEA	-	230	-	R	-	IECEx
[Model number]		[Voltage]		[Color]		[Certificates]
SEALR		24-DC24V		● R-Red		IECEx
SEAL		120-AC120V		● A-Amber		ATEX
SEAS		230-AC230V		● G-Green		KCs
SEA				● B-Blue		CCC(NEPSI) TS