

Ø70mm Ethernet LED Tower Lights

QTR70(M)L-ETN

Remote control through internet or local area network



QTR70(M)L-ETN Series

QTR70(M)L-ETN Ø70mm Ethernet LED Tower Lights

Model number	Layers	Voltage	Certificates	Color
QTR70(M)L-ETN-BZ QTRA70(M)L-ETN-BZ (BZ: 5 buzzer sounds)	1	DC12V DC24V AC110V-220V	-	● R-Red
	2	DC12V DC24V AC110V-220V		● R-Red ● G-Green
	3	DC12V DC24V AC110V-220V		● R-Red ● A-Amber ● G-Green
	4	DC12V DC24V AC110V-220V		● R-Red ● A-Amber ● G-Green ● B-Blue
	5	DC12V DC24V AC110V-220V		● R-Red ● A-Amber ● G-Green ● B-Blue ○ W-White

Light source/buzzer current(based on 1 layer)

Voltage	DC12V	DC24V	AC110V-220V
Light source current(1 layer)	0.285A	0.300A	Max.0.075A
Buzzer current	0.215A	0.245A	Max.0.055A

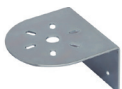
Mounting bracket

Standard	LB24	LW24	QZ24
Steel	Steel	ABS	ABS
SZ24	QL24	SL24	
Al	ABS	Al	

※ Please refer to [Tower Light Mounting Bracket] on this catalogue for detailed dimensions

Customization

- Customized color arrangements
- Customized pole length available
- Wall mount bracket



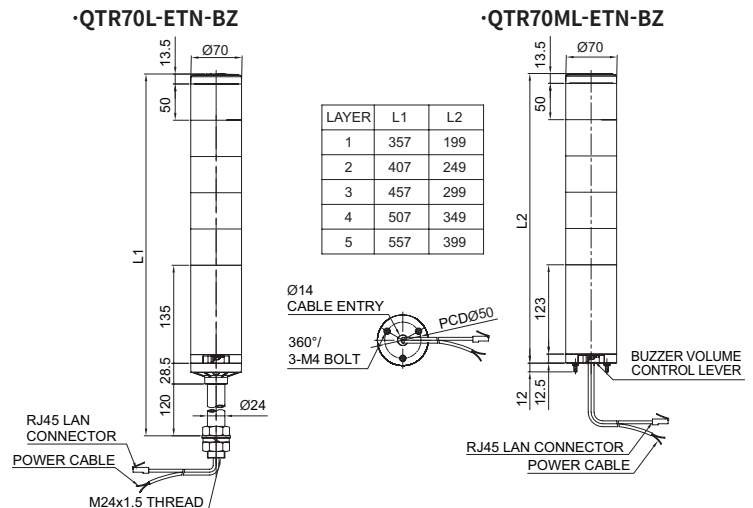
Wall mount bracket
TWS80



Wall mount bracket
TWA80

Technical Diagram

Units : mm



Wiring Instructions

- Apply properly rated voltage through the POWER CABLE
- Connect the RJ45 connector of the UTP cable into the PC's Ethernet port or router
- External power line UL1015 AWG18(0.75sq) x 2C 400mm
- Power plug will be provided in case of AC type
- UTP cable: Category 5 cable

Ordering Specifications

QTR70L-ETN-BZ	-	3	-	24	-	RAG	-	LW24
[Model number]		[Layers]		[Voltage]		[Color]		[Bracket]
QTR70L-ETN-BZ		1-1 Layers		12-DC12V		● R-Red		None-Standard
QTR70ML-ETN-BZ		2-2 Layers		24-DC24V		● A-Amber		Bracket
QTRA70L-ETN-BZ		3-3 Layers		110/220-AC110V-220V		● G-Green		-LB24 -LW24
QTRA70ML-ETN-BZ		4-4 Layers				● B-Blue		-QZ24 -SZ24
		5-5 Layers				○ W-White		-QL24 -SL24