

# SEBA Series



SEBA

## PRODUCT SPECIFICATION

SEBALR I SEBAL  
SEBAS I SEBA

**Materials** Lens-Tempered glass, Filter-PC, Housing-Al, Protection cage-STS316L, Reflector-PC, Reflector-Heat resistant ABS  
**Ambient operating temperature**  $-40^{\circ}\text{C} \leq T_{\text{amb}} \leq +60^{\circ}\text{C}$   
**Explosion protection rating** Ex d IIC T6, IP55  
**Housing standard color** MUNSELL No. 7.5BG 7/2  
**Cable entry** 1/2" NPT

- Large explosion proof signal beacon and alarm bell combinations



SEBAL

### SEBALR LED Revolving Signal Beacon and Alarm Bell

Model number	Voltage	Current	Volume	Certificates	Weight	Color
SEBALR	DC24V	0.190A	Max.95dB	-	7.20kg	R-Red
	AC110V	0.145A			7.92kg	A-Amber
	AC220V	0.060A			7.92kg	G-Green

· Revolving speed: 120-140RPM

### SEBAL LED Steady/ Flashing Signal Beacon and Alarm Bell

Model number	Voltage	Current	Volume	Certificates	Weight	Color
SEBAL	DC24V	0.210A	Max.95dB	-	7.25kg	R-Red
	AC110V	0.160A			7.99kg	A-Amber
	AC220V	0.070A			7.99kg	G-Green

· Flashing rate: 60-80 flashes/min(Built in switch for steady/flashing selection)

### SEBAS Xenon Strobe Signal Beacon and Alarm Bell

Model number	Voltage	Current	Xenon lamp			Volume	Certificates	Weight	Color
			Spec	Standard	Parts no				
SEBAS	DC24V	0.660A	200V -550V	EUB0641 -1A(G) U type	48	Max. 95dB	-	7.37kg	R-Red
	AC110V	0.220A						8.06kg	A-Amber
	AC220V	0.160A						8.06kg	G-Green

· Lamp connector fastening structure allows for convenient lamp replacement

· Flashing rate: 60-80 flashes/min

### SEBA Bulb Revolving Signal Beacon and Alarm Bell

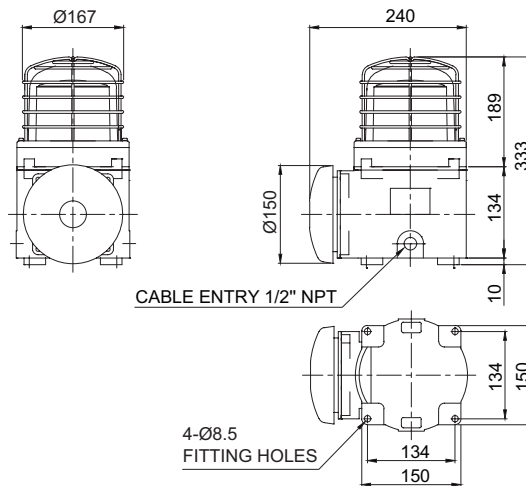
Model number	Voltage	Current	Bulb			Volume	Certificates	Weight	Color
			Spec	Standard	Parts no				
SEBA	DC24V	0.870A	24V15W	G23 15S	18	Max. 95dB	KIMM	7.37kg	R-Red
	AC110V	0.290A	12V15W	G23 15S	17			8.06kg	A-Amber
	AC220V	0.145A	12V15W	G23 15S	17			8.06kg	G-Green

· Revolving speed: 120-140RPM

## Technical Diagram

Units: mm

·SEBALR / SEBAL / SEBAS / SEBA



SEBAS



SEBALR

## Customization

- Explosion proof cable gland attached type available (Standard type does not come with explosion proof cable gland)
- 2 ways cable entries
- Customized cable entry (3/4" NPT, M20×1.5, M25×1.5) available

## Ordering Specification

SEBA	-	220	-	R
[Model number]		[Voltage]		[Color]
SEBALR		24-DC24V		● R-Red
SEBAL		110-AC110V		● A-Amber
SEBAS		220-AC220V		● G-Green
SEBA				● B-Blue