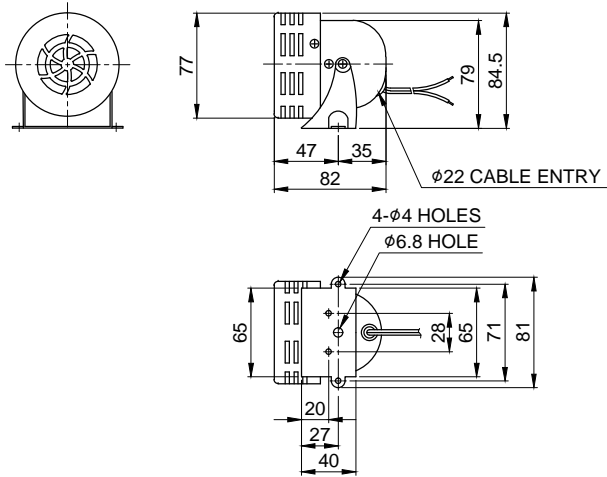
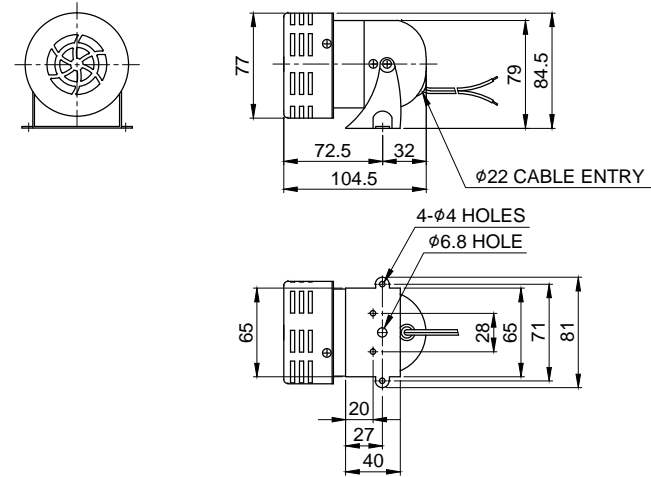


MARK	DATE	REVISION	REVISER	APP.BY
1				
2				



MODEL NO	SM30		
MATERIAL	HOUSING-STEEL		
USE VOLT.	CURRENT	DC12V	3.222A
		DC24V	1.779A
		AC110V	1.333A
		AC220V	1.000A
VOLUME	MAX. 110dB		
CABLE ENTRY	ø22 LEAD HOLE		
COLOR OF HOUSING	RED		
RATING	10 MIN.		



SM30-DC12V/ 24V



SM30-AC110V/ 220V

ISO2768-1 : CLASS OF TOLERANCE						SURFACE FINISH	-	-	-	-	1	-
FOR LINEAR DIMENSIONS		f	m	Ⓒ	v		Nr.	DWG. NO.	TITLE/ NAME	MAT'L	QTY	REFERENCE
	0.5~3	±0.05	±0.1	±0.2	-	DSND BY S.H.KIM	CHKD BY J.H.PARK		APRV BY J.K.HAN	VIEW 3	DATE 2019.03.20	
	3~6			±0.3	±0.5							
	6~30	±0.1	±0.2	±0.5	±1							
	30~120	±0.15	±0.3	±0.8	±1.5							
	120~400	±0.2	±0.5	±1.2	±2.5							
400~1000	±0.3	±0.8	±2	±4								
FOR ANGULAR DIMENSIONS	0~10	±1°		±1°30'	±3°	<div>TITLE SM30 OUTLINE DRAWING</div> <div></div> <div>MODEL SM30</div>						
	10~50	±0°30'		±1°	±2°							
	50~120	±0°20'		±0°30'	±1°							
	120~400	±0°10'		±0°13'	±0°30'							
						DWG. NO.		SM30_OUT				
						SCALE N/S	SIZE A4	REV 00	SHEET 1/1			

**Qlight**